



CUBO HOME

PROFESSIONALISM

A quality that defines us in the results of all our work, always improving the expectations of our clients.

RESPONSIBILITY

We are committed to the organisation and execution of each project, meeting the agreed deadlines and quality standards.

TRUST

We have the capacity to respond, resolve, understand and accompany in any type of situation in order to achieve the objectives set.

INDEX

1

¿Who we are?

Learn more about our history and our vision

2

House models

Get to know our most iconic models of the brand

3

Interior design

The importance of finishes for a comfortable home

4

Exterior design

Complete your home with gardens, garage space or barbecue area.



1



& WHO WE ARE?



WHO WE ARE ?

Our company has extensive experience working with various developers. The company's task is to build the house of your dreams, so we lead the client to the very final moment, fulfilling all his wishes.

We have the best professional technical team, the best materials and the most innovative and technologically advanced working methods.

Over the years, we have become a reference company in the sector, which has enabled us to form working alliances with major companies in our country.

Therefore, since 2010, we have focused on the construction of houses and new buildings, which has become one of the main activities of the company. Therefore, in 2018 we decided to create our own concept of building modular houses from shipping containers.

At Cubo Home, we want our customers to find comfort in their homes,

OUR TRAJECTORY

In our trajectory, we have delivered more than 150 homes, and at present, more than 8 homes are under development, all of them in traditional construction.

The common feature of all our developments is our quality, endorsed by various national bodies. In this way, Cubo Home, homes are conceived to enjoy their spaces with state-of-the-art designs, with the latest technologies and systems that make them sustainable, with various options adapted to the tastes of the clients that make them customisable, and with all the requirements that make them safe and healthy.

In this way, our innovation team studies and analyses processes and materials for the homes of the future in order to continue advancing and offering our customers the highest quality.

At Cubo Home we want our customers to find comfort in their homes, promoting a pleasant and sustainable lifestyle.

WHY HAVE WE SWITCHED TO THIS NEW CONSTRUCTION SYSTEM?

The answer is simple: the construction of modular housing with containers has great advantages in terms of speed of manufacture, resistance and airtightness, efficiency and sustainability, all with the best qualities.

Our way of working allows us to obtain excellent results in terms of comfort, energy efficiency, resistance, insulation and habitability, all with modern and elegant designs. Here we present one of our PREMIUM designs of modular house with sea containers.

Efficient houses increase thermal comfort and reduce energy consumption, offering minimum consumption and maximum energy efficiency.

Through our technical department, made up of engineers, architects and technical architects, we translate the needs of each client into a comfortable, practical, unique and sustainable house, respecting maximum energy efficiency and taking care of the environment.

2



HOUSE MODELS



UBUD MODEL





USABLE SURFACE AREA:	119,28 m2
CONSTRUCTED AREA	137,74 m2
HOUSING:	118,91 m2
PORCHES	18,83 m2

MAIN FLOOR:	
Access	4,33 m2
Lounge/dining room	22,10 m2
kitchen	23,81 m2
Bedroom 1	8,94 m2
Bedroom 2	8,85 m2
Bedroom 3 (P)	9,54 m2
Dressing room	5,73 m2
Bathroom 1	4,91 m2
Bathroom 2	7,13 m2

Modular House Model "UBUD

The Ubud prefabricated house is the perfect model for those looking for the highest performance in the most compact space. With three bedrooms and two bathrooms, it is a 138 m2 house with all the comforts of a first residence, including a large kitchen and the master bedroom en suite, with dressing room.

The volume is designed to create a continuous porch between the main rooms of the house, the garden and the swimming pool. This allows you to enjoy a shaded space outside. The visual connection with the garden is direct from all points of the house, creating an exceptional exterior-interior relationship and emphasising the feeling of spaciousness.

The living-dining room and kitchen are designed in such a way that there is a connection between the spaces, as well as visual independence and privacy between the two. In addition, this element can disappear for those cases in which a completely open and diaphanous space is desired. The large kitchen has all the necessary elements to enjoy this space, as well as an auxiliary dining area for daily use, which is very functional for the family's day-to-day life.

In the night area there are two single bedrooms with a bathroom and the master bedroom with en-suite bathroom and dressing room.

HOUSING: 137,74 m2

We want to give an approximation of what can be the project of an Ubud Model house built turnkey with medium-high qualities, the customer can always choose quality improvements according to their tastes with variation in price.

The only thing that would be missing would be the electricity and water connections to the street and the connection to drains, which will vary depending on the location.



GENERAL PLAN OF THE HOUSE



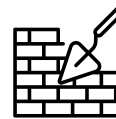
FOUNDATION AND STRUCTURE

The structure will be built with sea containers.
The correct execution of all the elements will be validated by an approved Technical Control Body of recognised prestige. During the execution of the work, a strict quality control will be carried out by an approved and independent laboratory.



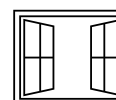
FACADES

The façade of the building has been designed to give the development an elegant and unique image.
It will be made up of a combination of different materials, pending definition in the development of the project (brick clad on the outside with cement mortar, brick with ceramic cladding,...). The façade will be completed with carpentry that will allow and improve the entry of light into the interior of the dwellings. It will be thermally insulated on the inside.
On the interior side, which faces the dwelling, the façade enclosure will be completed with a technical partition wall of laminated plaster, which will be insulated on the inside.



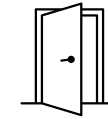
PARTITIONING AND INSULATION

The house will have thermal insulation inside for greater acoustic and thermal comfort.
The interior distribution of the dwellings will be carried out with a system of laminated plasterboard partitions with interior insulation.



EXTERIOR CARPENTRY

The exterior carpentry of the house is made of coloured lacquered aluminium. To guarantee the correct insulation, the aluminium profiles will integrate a thermal break system that reduces the transmission of cold/heat between the exterior and the interior of the house.
The windows in the bedrooms and living room will be fitted with aluminium slat roller blinds. The blinds are insulated on the inside and have the same colour as the rest of the carpentry.
The glazing of the windows will consist of Climalit type double glazing or similar, with an intermediate air chamber, which in addition to favouring thermal insulation conditions, favours greater acoustic insulation, providing the dwelling with greater comfort inside.



INTERIOR CARPENTRY

The entrance door to the property from the street will be armoured, coated in colour, with security lock, chrome-plated exterior knob and peephole.
The interior doors will be white with aluminium handles.
The wardrobes are built-in, modular monoblock type, with doors, in white, folding or sliding according to the designer's design.



ROOFS

The dwelling will have a false ceiling in the entrance hall, corridor, kitchen and bathrooms, as well as in the areas where installations pass through.
A register or a false ceiling will be installed to access the installations that require it.
In the rest of the dwelling, the ceiling will be finished in plaster, in such a way as to provide greater free height.



PAVEMENTS

In the living room, bedrooms and hallways, imitation wood ceramic flooring will be installed with skirting board to match the interior carpentry.
The bathrooms of the house, as well as the laundry room will have the same imitation wood ceramic flooring as in the rest of the house.
The porch will be tiled with ceramic tiles suitable for outdoor use.



COATINGS AND PAINT

In the bathrooms, the walls will be covered with porcelain stoneware tiles combined with plastic paint.
In the kitchen, the walls will be finished in smooth white plastic paint and porcelain stoneware tiles to the client's taste.
In the rest of the house, the walls and ceilings will be finished with smooth white plastic paint or to the client's taste.



KITCHEN

The kitchen will be delivered furnished with large capacity wall and base units.

The worktop will be made of compact quartz material, which offers greater durability and resistance to use. In the area between the worktop and wall units, the wall finish will be of the same material as the worktop.

The kitchen equipment will be completed with an undercounter stainless steel sink with chrome mixer tap.



SANITARY WARE AND FITTINGS

The bathrooms will be fitted with modern design sanitary ware finished in white enamel.

In the main bathroom, a cabinet with drawers and integrated washbasin will be installed. In the secondary bathroom and ground floor bathroom, a suspended washbasin with chrome-plated drain will be installed.

Mirrors will be installed in both the main and secondary bathrooms.

In the main bathroom, a shower tray with screen will be installed. In the secondary bathroom, a bathtub will be installed.

All taps and fittings will be chrome-plated and with single lever control. In the main bathroom, the shower taps will be thermostatic.



HOT WATER, PLUMBING AND AIR-CONDITIONING

Domestic hot water will be produced using aerothermal energy.

The plumbing installation will be suitably insulated for better energy efficiency. Shut-off valves will be placed at the entrance to the house, in each bathroom and in the kitchen.

The air-conditioning of the house has been designed for the installation of a heat pump. The distribution inside the house will be by ducts, located in the false ceiling. Air outlet grilles will be installed in the living room and bedrooms. It has been planned to place the indoor machine in one of the bathrooms and the outdoor unit located on the roof of each dwelling (not included in the price).



ELECTRICITY AND TELECOMMUNICATIONS

The electrical installation of the dwelling will comply with the Low Voltage Electrotechnical Regulations and will provide the dwelling with independent circuits for lighting, power, air conditioning and electrical appliances.

An electrical socket suitable for outdoor use and a light point will be installed on the terraces.

TV and data sockets will be installed in bedrooms, living room and kitchen.

The electrical panel will be built into the entrance of the house. Also, at the entrance and embedded in the wall, there will be a register box for the telecommunications installations.

Video intercom with camera at the entrance to each dwelling.

MENORCA MODEL





USABLE SURFACE AREA: 75 m2
CONSTRUCTED AREA 75m2

MAIN FLOOR:
 Living-dining room -kitchen 27,22 m2
 Bedroom 1 12,03 m2
 Bedroom 2 9,34 m2
 Bathroom 1 5,06 m2
 Laundry room-clothesline 7,01 m2

Modular House Model "MENORCA".

Simple and minimalist; a prefabricated house made from shipping containers with all the comforts of a primary residence.

The house has a reinforced exterior-interior link between the main rooms and the garden, facilitating the relationship with the exterior and giving the house a special and differentiated character.

It is made up of an open-plan kitchen integrated into a 27-metre living room, which makes this the most important area of the house. Accompanied by two bedrooms with fitted wardrobes and a separate room designed as a laundry room or drying area, which if the client wishes can be designed as a third bedroom. The menorca model has a complete bathroom with shower.

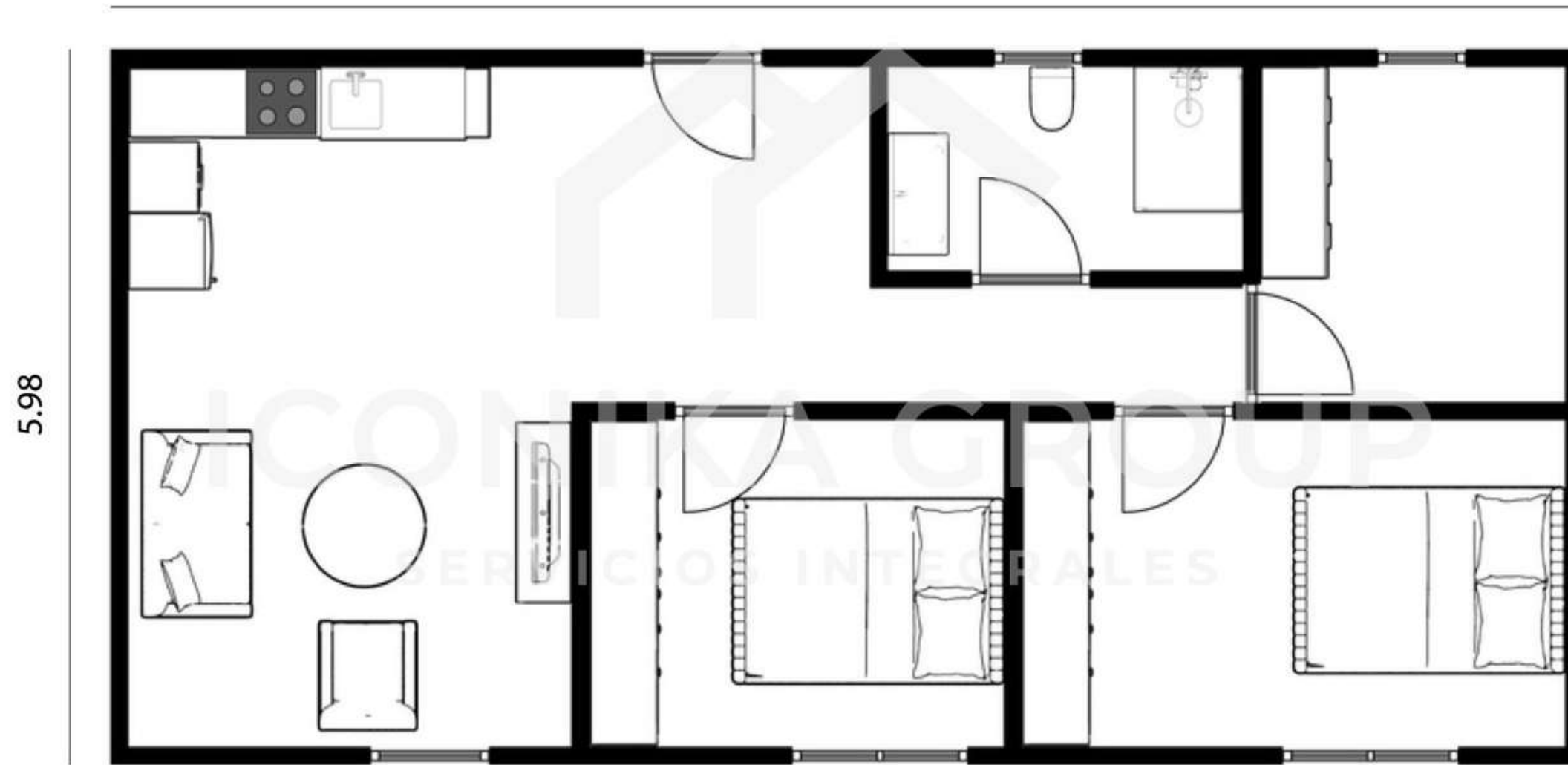
A house model designed for plots of land that are not too big and looking for a cosy house.

HOUSE: 75 m2

We want to give an approximation of what can be the project of a house Model Menorca built turnkey with medium-high quality, the customer can always choose quality improvements according to their tastes with variation in price.

The only thing missing would be the electricity and water connections to the street and the connection to drains, which will vary depending on the location.

12.23



GENERAL PLAN OF THE HOUSE



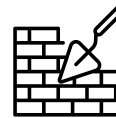
FOUNDATION AND STRUCTURE

The structure will be built with sea containers.
The correct execution of all the elements will be validated by an approved Technical Control Body of recognised prestige. During the execution of the work, a strict quality control will be carried out by an approved and independent laboratory.



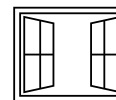
FACADES

The façade of the building has been designed to give the development an elegant and unique image.
It will be made up of a combination of different materials, pending definition in the development of the project (brick clad on the outside with cement mortar, brick with ceramic cladding,...). The façade will be completed with carpentry that will allow and improve the entry of light into the interior of the dwellings. It will be thermally insulated on the inside.
On the interior side, which faces the dwelling, the façade enclosure will be completed with a technical partition wall of laminated plaster, which will be insulated on the inside.



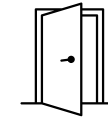
PARTITIONING AND INSULATION

The house will have thermal insulation inside for greater acoustic and thermal comfort.
The interior distribution of the dwellings will be carried out with a system of laminated plasterboard partitions with interior insulation.



EXTERIOR CARPENTRY

The exterior carpentry of the house is made of coloured lacquered aluminium. To guarantee the correct insulation, the aluminium profiles will integrate a thermal break system that reduces the transmission of cold/heat between the exterior and the interior of the house.
The windows in the bedrooms and living room will be fitted with aluminium slat roller blinds. The blinds are insulated on the inside and have the same colour as the rest of the carpentry.
The glazing of the windows will consist of Climalit type double glazing or similar, with an intermediate air chamber, which in addition to favouring thermal insulation conditions, favours greater acoustic insulation, providing the dwelling with greater comfort inside.



INTERIOR CARPENTRY

The entrance door to the property from the street will be armoured, coated in colour, with security lock, chrome-plated exterior knob and peephole.
The interior doors will be white with aluminium handles.
The wardrobes are built-in, modular monoblock type, with doors, in white, folding or sliding according to the designer's design.



ROOFS

The dwelling will have a false ceiling in the entrance hall, corridor, kitchen and bathrooms, as well as in the areas where installations pass through.
A register or a false ceiling will be installed to access the installations that require it.
In the rest of the dwelling, the ceiling will be finished in plaster, in such a way as to provide greater free height.



PAVEMENTS

In the living room, bedrooms and hallways, imitation wood ceramic flooring will be installed with skirting board to match the interior carpentry.
The bathrooms of the house, as well as the laundry room will have the same imitation wood ceramic flooring as in the rest of the house.
The porch will be tiled with ceramic tiles suitable for outdoor use.



COATINGS AND PAINT

In the bathrooms, the walls will be covered with porcelain stoneware tiles combined with plastic paint.
In the kitchen, the walls will be finished in smooth white plastic paint and porcelain stoneware tiles to the client's taste.
In the rest of the house, the walls and ceilings will be finished with smooth white plastic paint or to the client's taste.



KITCHEN

The kitchen will be delivered furnished with large capacity wall and base units.

The worktop will be made of compact quartz material, which offers greater durability and resistance to use. In the area between the worktop and wall units, the wall finish will be of the same material as the worktop.

The kitchen equipment will be completed with an undercounter stainless steel sink with chrome mixer tap.



SANITARY WARE AND FITTINGS

The bathrooms will be fitted with modern design sanitary ware finished in white enamel.

In the main bathroom, a cabinet with drawers and integrated washbasin will be installed. In the secondary bathroom and ground floor bathroom, a suspended washbasin with chrome-plated drain will be installed.

Mirrors will be installed in both the main and secondary bathrooms.

In the main bathroom, a shower tray with screen will be installed. In the secondary bathroom, a bathtub will be installed.

All taps and fittings will be chrome-plated and with single lever control. In the main bathroom, the shower taps will be thermostatic.



HOT WATER, PLUMBING AND AIR-CONDITIONING

Domestic hot water will be produced using aerothermal energy.

The plumbing installation will be suitably insulated for better energy efficiency. Shut-off valves will be placed at the entrance to the house, in each bathroom and in the kitchen.

The air-conditioning of the house has been designed for the installation of a heat pump. The distribution inside the house will be by ducts, located in the false ceiling. Air outlet grilles will be installed in the living room and bedrooms. It has been planned to place the indoor machine in one of the bathrooms and the outdoor unit located on the roof of each dwelling (not included in the price).



ELECTRICITY AND TELECOMMUNICATIONS

The electrical installation of the dwelling will comply with the Low Voltage Electrotechnical Regulations and will provide the dwelling with independent circuits for lighting, power, air conditioning and electrical appliances.

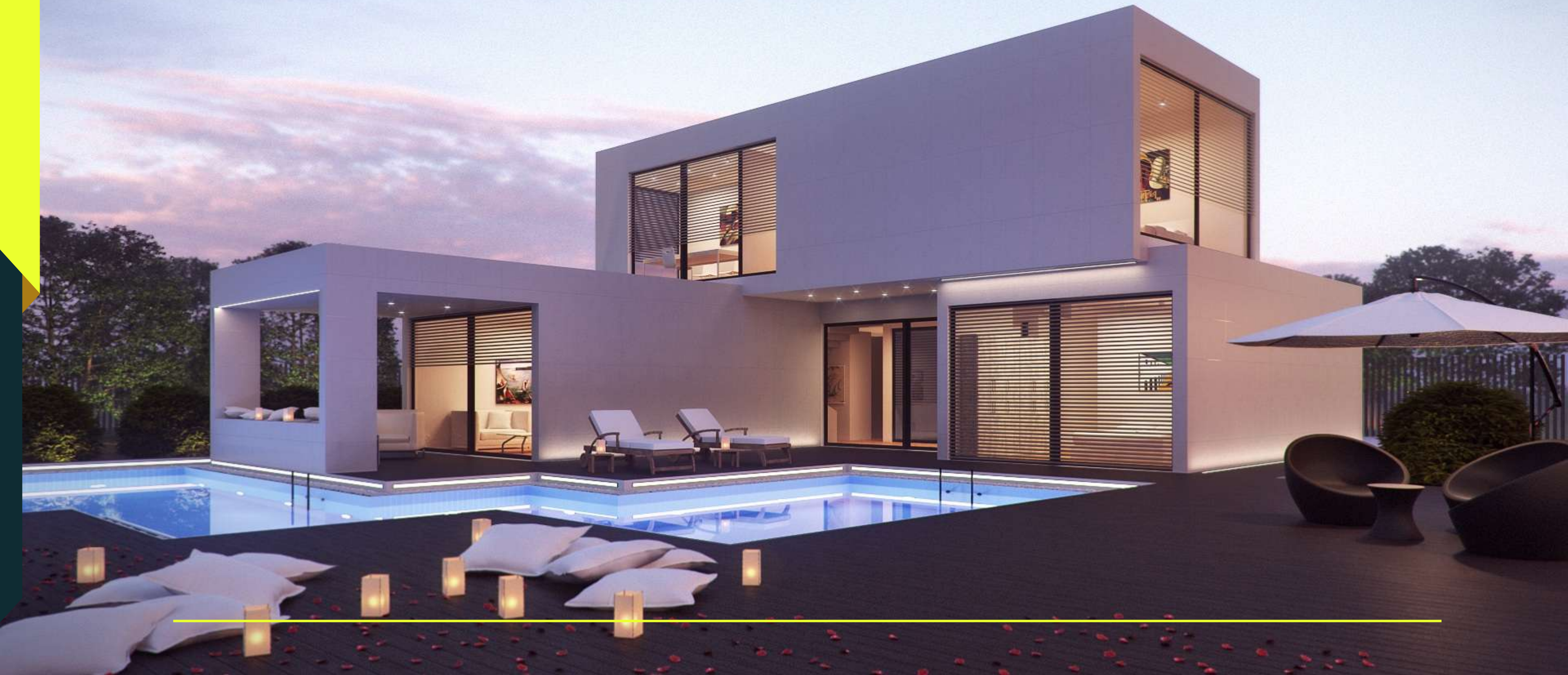
An electrical socket suitable for outdoor use and a light point will be installed on the terraces.

TV and data sockets will be installed in bedrooms, living room and kitchen.

The electrical panel will be built into the entrance of the house. Also, at the entrance and embedded in the wall, there will be a register box for the telecommunications installations.

Video intercom with camera at the entrance to each dwelling.

IBIZA MODEL





Modular House Model "IBIZA".

Our house "IBIZA" is a striking design designed to be enjoyed from all points of view. Spectacular to the eye thanks to its design of emphatic lines and large windows.

A two-storey house with an L-shaped ground floor in which in one wing we have the large day area and in the other wing the master bedroom with all the space you deserve. On the upper floor there is a study illuminated by two large windows with two additional bedrooms and a complete bathroom. The program is completed with a guest toilet, laundry room, a kitchen worthy of a chef and the dining room linked to a large porch.

The house has multiple porches that project the interior space to the exterior, a magnificent terrace on the upper floor that allows you to enjoy the long views of your plot and, of course, large windows that project light into the interior of the house stay.

HOUSING: 321,45 m2

USABLE SURFACE AREA: 278,80 m2
CONSTRUCTED AREA 321,45 m2
HOUSING: 226,26 m2
PORCHES 95,19 m2

GROUND FLOOR:: 118,39m2
 Entrance hall 16,07 m2
 Lounge/dining room 38,29 m2
 kitchen 21,78 m2
 Gallery 8,94 m2
 Toilet 3,10 m2
 Bedroom (P) 17,60 m2
 Dressing room 6,95 m2
 Bathroom 1 7,90 m2
PORCHES: 73,43 m2
 Entrance porch 2,28 m2
 living room porch 71,15 m2

FIRST FLOOR 69,83 m2
 Studio 27,40 m2
 Bedroom 1 15,31 m2
 Bedroom 2 14,05 m2
 Hallway 8,19 m2
 Bathroom 2 4,88 m2
 Upper porch 17,15 m2

We want to give an approximation of what can be the project of an Ibiza Model house built turnkey with medium-high qualities, the customer can always choose quality improvements according to their tastes with variation in price.

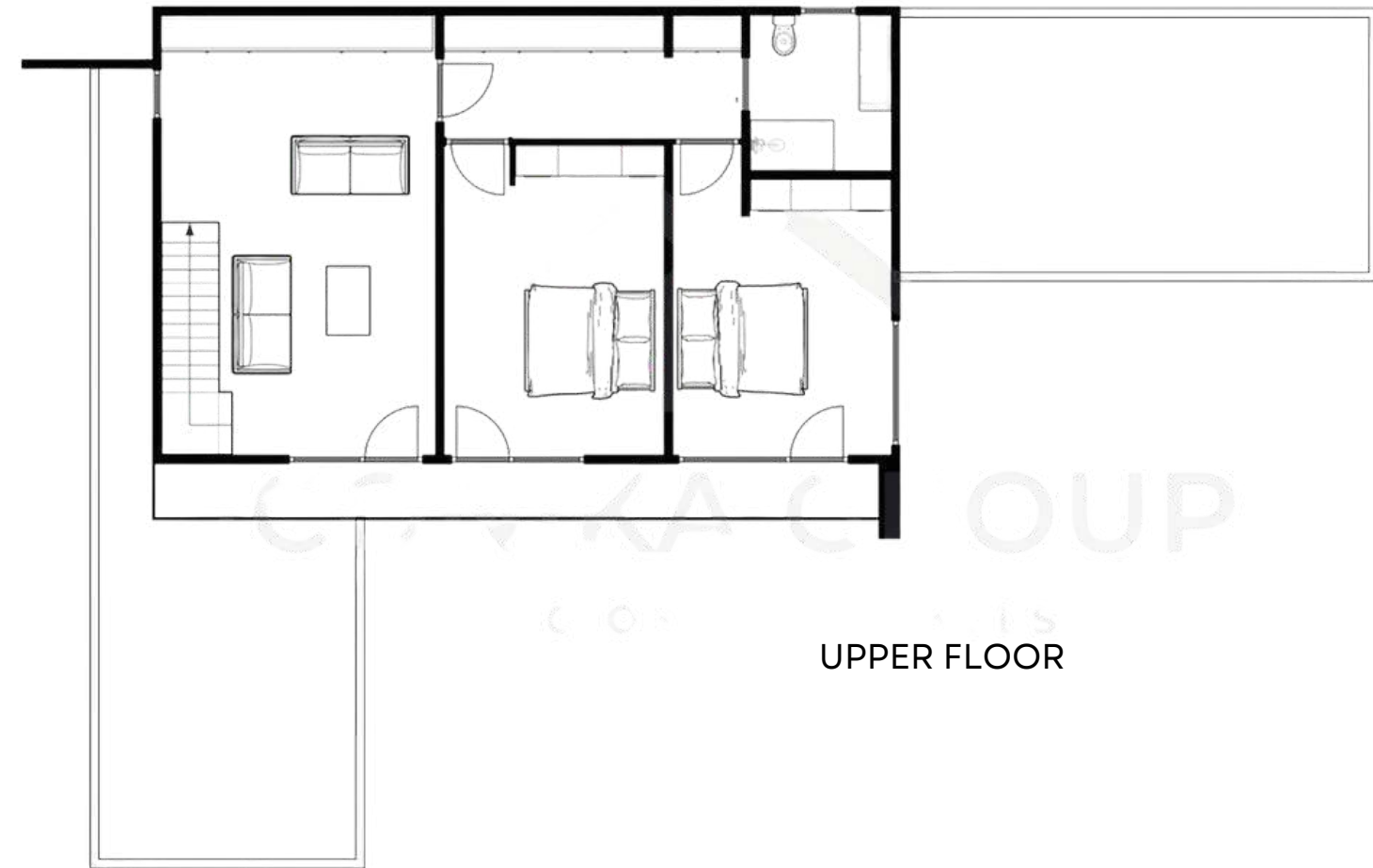
The only thing that would be missing would be the electricity and water connections to the street and the connection to drains, which will vary depending on the location.

23



GROUND FLOOR

23



UPPER FLOOR

16,5

GENERAL PLAN OF THE HOUSE



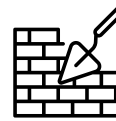
FOUNDATION AND STRUCTURE

The structure will be built with sea containers.
The correct execution of all the elements will be validated by an approved Technical Control Body of recognised prestige. During the execution of the work, a strict quality control will be carried out by an approved and independent laboratory.



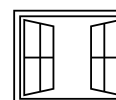
FACADES

The façade of the building has been designed to give the development an elegant and unique image.
It will be made up of a combination of different materials, pending definition in the development of the project (brick clad on the outside with cement mortar, brick with ceramic cladding,...). The façade will be completed with carpentry that will allow and improve the entry of light into the interior of the dwellings. It will be thermally insulated on the inside.
On the interior side, which faces the dwelling, the façade enclosure will be completed with a technical partition wall of laminated plaster, which will be insulated on the inside.



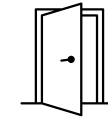
PARTITIONING AND INSULATION

The house will have thermal insulation inside for greater acoustic and thermal comfort.
The interior distribution of the dwellings will be carried out with a system of laminated plasterboard partitions with interior insulation.



EXTERIOR CARPENTRY

The exterior carpentry of the house is made of coloured lacquered aluminium. To guarantee the correct insulation, the aluminium profiles will integrate a thermal break system that reduces the transmission of cold/heat between the exterior and the interior of the house.
The windows in the bedrooms and living room will be fitted with aluminium slat roller blinds. The blinds are insulated on the inside and have the same colour as the rest of the carpentry.
The glazing of the windows will consist of Climalit type double glazing or similar, with an intermediate air chamber, which in addition to favouring thermal insulation conditions, favours greater acoustic insulation, providing the dwelling with greater comfort inside.



INTERIOR CARPENTRY

The entrance door to the property from the street will be armoured, coated in colour, with security lock, chrome-plated exterior knob and peephole.
The interior doors will be white with aluminium handles.
The wardrobes are built-in, modular monoblock type, with doors, in white, folding or sliding according to the designer's design.



ROOFS

The dwelling will have a false ceiling in the entrance hall, corridor, kitchen and bathrooms, as well as in the areas where installations pass through.
A register or a false ceiling will be installed to access the installations that require it.
In the rest of the dwelling, the ceiling will be finished in plaster, in such a way as to provide greater free height.



PAVEMENTS

In the living room, bedrooms and hallways, imitation wood ceramic flooring will be installed with skirting board to match the interior carpentry.
The bathrooms of the house, as well as the laundry room will have the same imitation wood ceramic flooring as in the rest of the house.
The porch will be tiled with ceramic tiles suitable for outdoor use.



COATINGS AND PAINT

In the bathrooms, the walls will be covered with porcelain stoneware tiles combined with plastic paint.
In the kitchen, the walls will be finished in smooth white plastic paint and porcelain stoneware tiles to the client's taste.
In the rest of the house, the walls and ceilings will be finished with smooth white plastic paint or to the client's taste.



KITCHEN

The kitchen will be delivered furnished with large capacity wall and base units.

The worktop will be made of compact quartz material, which offers greater durability and resistance to use. In the area between the worktop and wall units, the wall finish will be of the same material as the worktop.

The kitchen equipment will be completed with an undercounter stainless steel sink with chrome mixer tap.



SANITARY WARE AND FITTINGS

The bathrooms will be fitted with modern design sanitary ware finished in white enamel.

In the main bathroom, a cabinet with drawers and integrated washbasin will be installed. In the secondary bathroom and ground floor bathroom, a suspended washbasin with chrome-plated drain will be installed.

Mirrors will be installed in both the main and secondary bathrooms.

In the main bathroom, a shower tray with screen will be installed. In the secondary bathroom, a bathtub will be installed.

All taps and fittings will be chrome-plated and with single lever control. In the main bathroom, the shower taps will be thermostatic.



HOT WATER, PLUMBING AND AIR-CONDITIONING

Domestic hot water will be produced using aerothermal energy.

The plumbing installation will be suitably insulated for better energy efficiency. Shut-off valves will be placed at the entrance to the house, in each bathroom and in the kitchen.

The air-conditioning of the house has been designed for the installation of a heat pump. The distribution inside the house will be by ducts, located in the false ceiling. Air outlet grilles will be installed in the living room and bedrooms. It has been planned to place the indoor machine in one of the bathrooms and the outdoor unit located on the roof of each dwelling (not included in the price).



ELECTRICITY AND TELECOMMUNICATIONS

The electrical installation of the dwelling will comply with the Low Voltage Electrotechnical Regulations and will provide the dwelling with independent circuits for lighting, power, air conditioning and electrical appliances.

An electrical socket suitable for outdoor use and a light point will be installed on the terraces.

TV and data sockets will be installed in bedrooms, living room and kitchen.

The electrical panel will be built into the entrance of the house. Also, at the entrance and embedded in the wall, there will be a register box for the telecommunications installations.

Video intercom with camera at the entrance to each dwelling.

MODELO LUGANO





Modular House Model "LUGANO".

An elegant and timeless design that will leave no one indifferent. Our Lugano model is a home with an elegant finish in cream and light grey tones creating a minimalist design.

A distribution where each function has its own space. The kitchen area is linked to the living-dining room by sharing the outdoor space. The kitchen island also has a dining area for everyday use. The day area is completed with a toilet, favouring the privacy of the inhabitants of this home. The industrialised Lugano design house adapts 100% to its inhabitants.

The master bedroom has a complete wing and its own private outdoor space. The large dressing room and a bathroom with independent use spaces will facilitate the day-to-day life of the inhabitants of this house.

Finally, in the fourth wing of the house there are two further bedrooms sharing a bathroom.

HOUSING: 224,32 m²

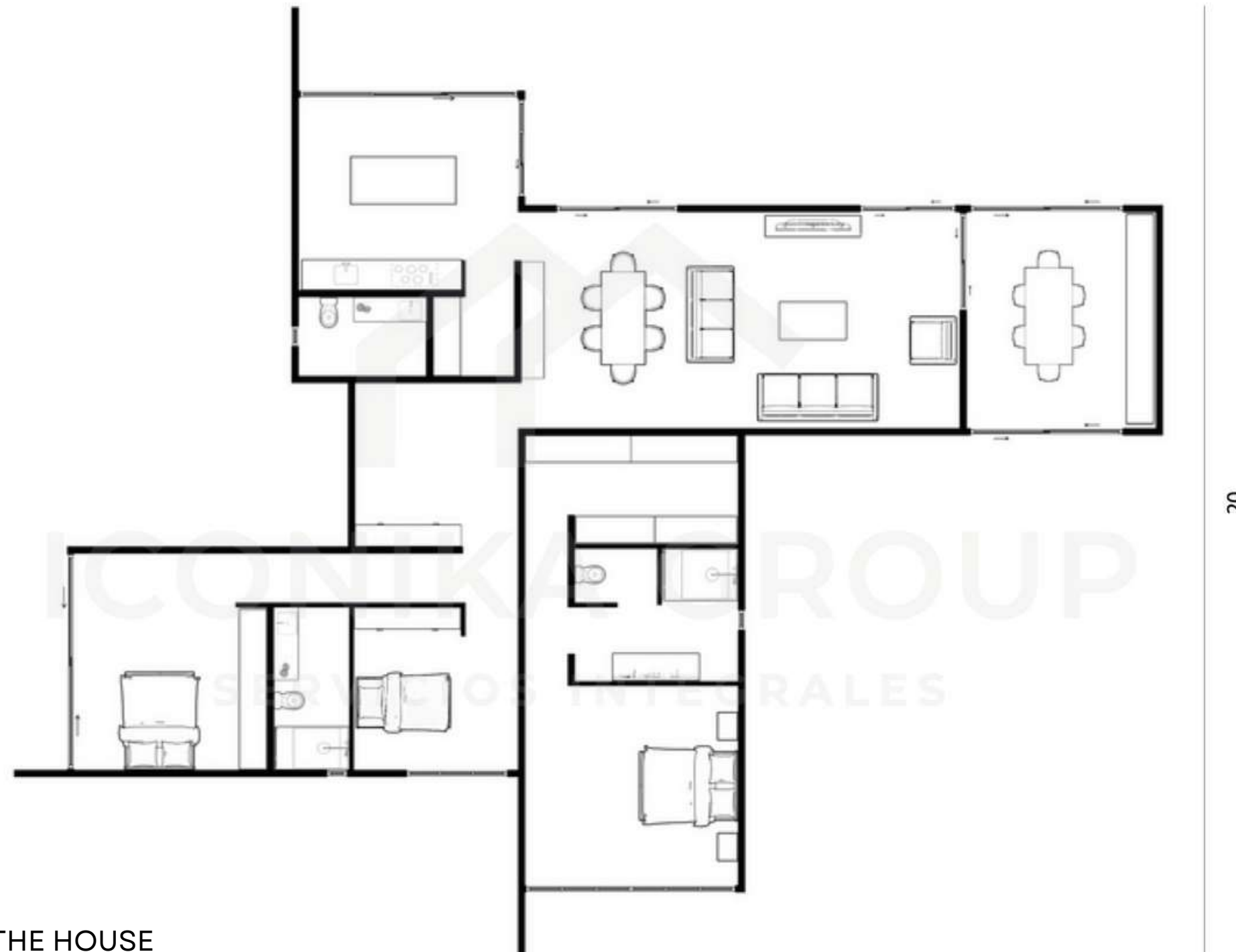
USABLE SURFACE AREA: 143,01 m²
CONSTRUCTED AREA 224,32 m²
HOUSING: 179,54 m²
PORCHES 43,27 m²

MAIN FLOOR: 143,01 m²
 Entrance hall 10,25 m²
 Toilet 3,85 m²
 Kitchen 19,68 m²
 Lounge/dining room 39,33 m²
 Bedroom 1 10,04 m²
 Bedroom 2 10,04 m²
 Bedroom 3 (P) 20,84 m²
 Dressing room 8,85 m²
 Bathroom 1 (P) 8,80 m²
 Bathroom 2 5,02 m²
 Hallway 6,31 m²

PORCHES 43,27 m²
 Porche de acceso 3,86 m²
 Porche cocina 7,98 m²
 Porche salon comedor 18,13 m²
 Porche dormitorio (P) 7,98m²
 Porche dormitorio 2 5,32 m²

We want to give an approximation of what can be the project of an Lugano Model house built turnkey with medium-high qualities, the customer can always choose quality improvements according to their tastes with variation in price.

The only thing that would be missing would be the electricity and water connections to the street and the connection to drains, which will vary depending on the location.



20

GENERAL PLAN OF THE HOUSE



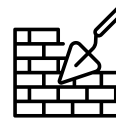
FOUNDATION AND STRUCTURE

The structure will be built with sea containers.
The correct execution of all the elements will be validated by an approved Technical Control Body of recognised prestige. During the execution of the work, a strict quality control will be carried out by an approved and independent laboratory.



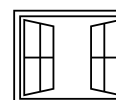
FACADES

The façade of the building has been designed to give the development an elegant and unique image.
It will be made up of a combination of different materials, pending definition in the development of the project (brick clad on the outside with cement mortar, brick with ceramic cladding,...). The façade will be completed with carpentry that will allow and improve the entry of light into the interior of the dwellings. It will be thermally insulated on the inside.
On the interior side, which faces the dwelling, the façade enclosure will be completed with a technical partition wall of laminated plaster, which will be insulated on the inside.



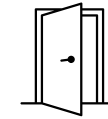
PARTITIONING AND INSULATION

The house will have thermal insulation inside for greater acoustic and thermal comfort.
The interior distribution of the dwellings will be carried out with a system of laminated plasterboard partitions with interior insulation.



EXTERIOR CARPENTRY

The exterior carpentry of the house is made of coloured lacquered aluminium. To guarantee the correct insulation, the aluminium profiles will integrate a thermal break system that reduces the transmission of cold/heat between the exterior and the interior of the house.
The windows in the bedrooms and living room will be fitted with aluminium slat roller blinds. The blinds are insulated on the inside and have the same colour as the rest of the carpentry.
The glazing of the windows will consist of Climalit type double glazing or similar, with an intermediate air chamber, which in addition to favouring thermal insulation conditions, favours greater acoustic insulation, providing the dwelling with greater comfort inside.



INTERIOR CARPENTRY

The entrance door to the property from the street will be armoured, coated in colour, with security lock, chrome-plated exterior knob and peephole.
The interior doors will be white with aluminium handles.
The wardrobes are built-in, modular monoblock type, with doors, in white, folding or sliding according to the designer's design.



ROOFS

The dwelling will have a false ceiling in the entrance hall, corridor, kitchen and bathrooms, as well as in the areas where installations pass through.
A register or a false ceiling will be installed to access the installations that require it.
In the rest of the dwelling, the ceiling will be finished in plaster, in such a way as to provide greater free height.



PAVEMENTS

In the living room, bedrooms and hallways, imitation wood ceramic flooring will be installed with skirting board to match the interior carpentry.
The bathrooms of the house, as well as the laundry room will have the same imitation wood ceramic flooring as in the rest of the house.
The porch will be tiled with ceramic tiles suitable for outdoor use.



COATINGS AND PAINT

In the bathrooms, the walls will be covered with porcelain stoneware tiles combined with plastic paint.
In the kitchen, the walls will be finished in smooth white plastic paint and porcelain stoneware tiles to the client's taste.
In the rest of the house, the walls and ceilings will be finished with smooth white plastic paint or to the client's taste.



KITCHEN

The kitchen will be delivered furnished with large capacity wall and base units.

The worktop will be made of compact quartz material, which offers greater durability and resistance to use. In the area between the worktop and wall units, the wall finish will be of the same material as the worktop.

The kitchen equipment will be completed with an undercounter stainless steel sink with chrome mixer tap.



SANITARY WARE AND FITTINGS

The bathrooms will be fitted with modern design sanitary ware finished in white enamel.

In the main bathroom, a cabinet with drawers and integrated washbasin will be installed. In the secondary bathroom and ground floor bathroom, a suspended washbasin with chrome-plated drain will be installed.

Mirrors will be installed in both the main and secondary bathrooms.

In the main bathroom, a shower tray with screen will be installed. In the secondary bathroom, a bathtub will be installed.

All taps and fittings will be chrome-plated and with single lever control. In the main bathroom, the shower taps will be thermostatic.



HOT WATER, PLUMBING AND AIR-CONDITIONING

Domestic hot water will be produced using aerothermal energy.

The plumbing installation will be suitably insulated for better energy efficiency. Shut-off valves will be placed at the entrance to the house, in each bathroom and in the kitchen.

The air-conditioning of the house has been designed for the installation of a heat pump. The distribution inside the house will be by ducts, located in the false ceiling. Air outlet grilles will be installed in the living room and bedrooms. It has been planned to place the indoor machine in one of the bathrooms and the outdoor unit located on the roof of each dwelling (not included in the price).



ELECTRICITY AND TELECOMMUNICATIONS

The electrical installation of the dwelling will comply with the Low Voltage Electrotechnical Regulations and will provide the dwelling with independent circuits for lighting, power, air conditioning and electrical appliances.

An electrical socket suitable for outdoor use and a light point will be installed on the terraces.

TV and data sockets will be installed in bedrooms, living room and kitchen.

The electrical panel will be built into the entrance of the house. Also, at the entrance and embedded in the wall, there will be a register box for the telecommunications installations.

Video intercom with camera at the entrance to each dwelling.

MODEL SINGAPORE





USABLE SURFACE AREA:	135,17 m2
CONSTRUCTED AREA	154,49 m2
HOUSING:	130,00 m2
PORCHES	24,49 m2

MAIN FLOOR:	
Entrance hall	10,40 m2
Kitchen	7,10 m2
Lounge/dining room	34 m2
Bedroom 1	11,21 m2
Bedroom 2	10,58 m2
Bedroom 3 (P)	17,78 m2
Dressing room	6,65 m2
Bathroom 1	5,34 m2
Bathroom 2	4,97 m2
Hallway	2,65 m2
PORCHES	24,49m2

Modular House Model "SINGAPORE".

A modern property with an elegant design designed for families who do not require a large living area but want to enjoy spacious living spaces in their future home.

With a ground floor layout, it distributes the uses of the house in a functional way, on one side the day area with bathroom, laundry and a large living-dining room and kitchen with island while in the other wing, the two bedrooms, one of them with dressing room and bathroom.

With all the main rooms facing towards the central space so that the relationship between spaces also continues outside.

Geometric lines, large spaces, luminosity and energy efficiency. These are some of the keys that today define a designer home. And this Singapore model meets all the characteristics to be one of the most demanded models of the Iconika Group brand.

HOUSING: 154,49 m2

We want to give an approximation of what can be the project of an Singapore Model house built turnkey with medium-high qualities, the customer can always choose quality improvements according to their tastes with variation in price.

The only thing that would be missing would be the electricity and water connections to the street and the connection to drains, which will vary depending on the location.



GENERAL PLAN OF THE HOUSE



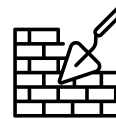
FOUNDATION AND STRUCTURE

The structure will be built with sea containers.
The correct execution of all the elements will be validated by an approved Technical Control Body of recognised prestige. During the execution of the work, a strict quality control will be carried out by an approved and independent laboratory.



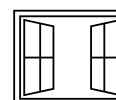
FACADES

The façade of the building has been designed to give the development an elegant and unique image.
It will be made up of a combination of different materials, pending definition in the development of the project (brick clad on the outside with cement mortar, brick with ceramic cladding,...). The façade will be completed with carpentry that will allow and improve the entry of light into the interior of the dwellings. It will be thermally insulated on the inside.
On the interior side, which faces the dwelling, the façade enclosure will be completed with a technical partition wall of laminated plaster, which will be insulated on the inside.



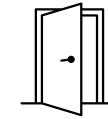
PARTITIONING AND INSULATION

The house will have thermal insulation inside for greater acoustic and thermal comfort.
The interior distribution of the dwellings will be carried out with a system of laminated plasterboard partitions with interior insulation.



EXTERIOR CARPENTRY

The exterior carpentry of the house is made of coloured lacquered aluminium. To guarantee the correct insulation, the aluminium profiles will integrate a thermal break system that reduces the transmission of cold/heat between the exterior and the interior of the house.
The windows in the bedrooms and living room will be fitted with aluminium slat roller blinds. The blinds are insulated on the inside and have the same colour as the rest of the carpentry.
The glazing of the windows will consist of Climalit type double glazing or similar, with an intermediate air chamber, which in addition to favouring thermal insulation conditions, favours greater acoustic insulation, providing the dwelling with greater comfort inside.



INTERIOR CARPENTRY

The entrance door to the property from the street will be armoured, coated in colour, with security lock, chrome-plated exterior knob and peephole.
The interior doors will be white with aluminium handles.
The wardrobes are built-in, modular monoblock type, with doors, in white, folding or sliding according to the designer's design.



ROOFS

The dwelling will have a false ceiling in the entrance hall, corridor, kitchen and bathrooms, as well as in the areas where installations pass through.
A register or a false ceiling will be installed to access the installations that require it.
In the rest of the dwelling, the ceiling will be finished in plaster, in such a way as to provide greater free height.



PAVEMENTS

In the living room, bedrooms and hallways, imitation wood ceramic flooring will be installed with skirting board to match the interior carpentry.
The bathrooms of the house, as well as the laundry room will have the same imitation wood ceramic flooring as in the rest of the house.
The porch will be tiled with ceramic tiles suitable for outdoor use.



COATINGS AND PAINT

In the bathrooms, the walls will be covered with porcelain stoneware tiles combined with plastic paint.
In the kitchen, the walls will be finished in smooth white plastic paint and porcelain stoneware tiles to the client's taste.
In the rest of the house, the walls and ceilings will be finished with smooth white plastic paint or to the client's taste.



KITCHEN

The kitchen will be delivered furnished with large capacity wall and base units.

The worktop will be made of compact quartz material, which offers greater durability and resistance to use. In the area between the worktop and wall units, the wall finish will be of the same material as the worktop.

The kitchen equipment will be completed with an undercounter stainless steel sink with chrome mixer tap.



SANITARY WARE AND FITTINGS

The bathrooms will be fitted with modern design sanitary ware finished in white enamel.

In the main bathroom, a cabinet with drawers and integrated washbasin will be installed. In the secondary bathroom and ground floor bathroom, a suspended washbasin with chrome-plated drain will be installed.

Mirrors will be installed in both the main and secondary bathrooms.

In the main bathroom, a shower tray with screen will be installed. In the secondary bathroom, a bathtub will be installed.

All taps and fittings will be chrome-plated and with single lever control. In the main bathroom, the shower taps will be thermostatic.



HOT WATER, PLUMBING AND AIR-CONDITIONING

Domestic hot water will be produced using aerothermal energy.

The plumbing installation will be suitably insulated for better energy efficiency. Shut-off valves will be placed at the entrance to the house, in each bathroom and in the kitchen.

The air-conditioning of the house has been designed for the installation of a heat pump. The distribution inside the house will be by ducts, located in the false ceiling. Air outlet grilles will be installed in the living room and bedrooms. It has been planned to place the indoor machine in one of the bathrooms and the outdoor unit located on the roof of each dwelling (not included in the price).



ELECTRICITY AND TELECOMMUNICATIONS

The electrical installation of the dwelling will comply with the Low Voltage Electrotechnical Regulations and will provide the dwelling with independent circuits for lighting, power, air conditioning and electrical appliances.

An electrical socket suitable for outdoor use and a light point will be installed on the terraces.

TV and data sockets will be installed in bedrooms, living room and kitchen.

The electrical panel will be built into the entrance of the house. Also, at the entrance and embedded in the wall, there will be a register box for the telecommunications installations.

Video intercom with camera at the entrance to each dwelling.



3



INTERIOR DESIGN





TRENDS DISAPPEAR, STYLE IS ETERNAL

Our aim is to achieve the full satisfaction of our clients, which is why we adapt to the tastes, needs and particular characteristics of each client in a totally personalised way. At Cubo Home Group we know that each space, like each person, is unique, which allows us to give our interior decoration work a special and exclusive character.

Exclusive bespoke kitchens in every design

All our kitchens are designed for each project each project, made to measure by our team of carpenters team of carpenters, where we take care of every to the last detail

The most important thing for our company is to offer you a space out of the ordinary. We have the best team of designers and carpenters, dedicated to providing you with the best technical advice. We are known for setting market trends and creating kitchens like no other.

Always at the forefront of design.





CREATE YOUR OWN STYLE

We tend to think that design is only the visual aspect of our kitchen, but good design goes much further. A good design looks for ways to make the most of the space in our kitchen, proposing the right components for the size and needs of the user.

Nowadays, the kitchen is one of the most used spaces in the home, because of the times when it is required and it has even become a family meeting point as it is the time when everyone gets together in the same room.

For this and more reasons, the kitchen is the room that truly requires design and planning to make it a pleasant space, but also to provide efficiency when using it.





STYLISH LIVING ROOMS UNIQUE

Top quality materials and soft textures are essential to design luxury living rooms. But designer furniture is useless if it is not really comfortable, which is why it is important to opt for furniture that combines design with comfort. Taking care of all the details is the best way to create warmth in a room where comfort is essential.

Bathrooms with a touch of elegance

The bathroom is one of the most visited rooms in a house. Whether for an early shower, a relaxing evening bath, brushing teeth, shaving, hair styling, etc. the bathroom is an essential part of the home.

So it seems logical that everyone wants a stylish, cosy and homely bathroom.

You can opt for dark colours that will bring sophistication, a minimalist look with white walls and few accessories that will bring spaciousness or opt for a more traditional design with colours or textures such as creams or browns.

Whatever design you choose, make sure it suits the age and style of your home and that it's a style that won't tire you out after a short time and can last you for years to come.





Your bathroom should be synonymous with relaxation, peace and harmony. It is precisely one of the places we visit most often in our home and where a great deal of energy is retained, which could even affect us emotionally.

The ideal is to see in this place, a corner to relax, that recharges us with positive energy and vitality. That is why having a design and decoration in accordance with the atmosphere we wish to create is essential to feel that our bathroom is a pleasant place.

There are different ways of organising the main parts and pieces that make up a bathroom, and in this sense, showers play a leading role. The needs and the number of people who will use the space will determine its main characteristics and, of course, the best layout will depend on its dimensions.

However, the common denominator is to obtain a space that is comfortable and inviting, not only for basic needs, but also to carry out other related activities such as putting on make-up, drying hair, changing clothes, among others.





4



EXTERIOR DESIGN

WE CREATE THE PERFECT SPACE

A welcoming home is as important as the place that surrounds it. That's why with Iconika you won't have to worry about anything because we have the best ideas to make your home as cosy inside as it is outside. The possibilities are endless, you only have to ask for it and we will do it.

1

GARAGE

2

POOLS AND SAUNA BATH

3

GARDENS

4

BARBECUE AREAS





STEP 1

Tell us your idea so that our designers can create several sketches.

STEP 2

You will have the advice of our technicians to make the project a reality.

STEP 3

Receive different designs to choose the one that meets your expectations.

STEP 4

Enjoy it with your loved ones!

IMAGINE IT AND YOU WILL HAVE IT



OUR VISION

To create unique, sustainable spaces that exceed our clients' expectations, because at the end of the day, we make their dreams come true.

OUR MISSION

All our designs are subjected to the strictest quality controls to create the most exclusive designs on the market.

WWW.CUBOHOME.ES

**LET'S MAKE YOUR
DREAM COME TRUE**

